



Tilmar

information leaflet

CavitySafe weephole protector stainless steel

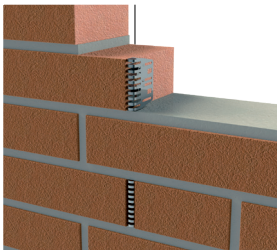
CavitySafe stainless steel insert for weep holes

CavitySafe, the patented universal solution for upgrading the outer wall and protecting the cavity against all kind of vermin.

- fits easy, no tools needed
- outstanding flexibility, fits in weep holes from 5 to 25mm width
- superb fixation, not manually removable
- adapts neatly, also in skew weep holes
- nice, seamless look, a piece of jewellery in the front wall
- standard heights; 4, 5, 6, 7, 9 and 24cm
- variable heights, easy to cut before mounting
- other heights for projects; ask for the possibilities
- strong stainless spring steel

Weep holes in the front wall

Weep holes in the front wall are necessary to ventilate and drain the cavity. That is why builders create them on specific spots. Not only air and water are travelling through the weep holes, also vermin, leaves and other dirt passes the weep holes into the cavity. Besides the, often irregular, black weep holes are disturbing the sight of the front wall. CavitySafe is the perfect solution to protect the cavity and upgrade the front wall.



CavitySafe is available in a sales package of 20 pieces



The CavitySafe is easy to cut with a special metal scissors

Eliminate unprotected weep holes!

The width of weep holes is often very irregular and varies in practice from about 6 to more than 20mm! Not only rats and mice are annoying and harmful, also bigger insects like bees and wasps are a threat. Unprotected weep holes are a perfect passage to the cavity for those animals, CavitySafe will stop them.



CavitySafe is a functional, nice and durable accessory for the facade

